

INTERNATIONAL ALLIANCE OF
RESEARCH UNIVERSITIES



AUSTRALIAN NATIONAL UNIVERSITY

ETH ZURICH
(SWISS FEDERAL INSTITUTE OF TECHNOLOGY ZURICH)

NATIONAL UNIVERSITY OF SINGAPORE

PEKING UNIVERSITY

UNIVERSITY OF CALIFORNIA, BERKELEY

UNIVERSITY OF CAMBRIDGE

UNIVERSITY OF COPENHAGEN

UNIVERSITY OF OXFORD

THE UNIVERSITY OF TOKYO

YALE UNIVERSITY

AN INFLUENTIAL PARTNERSHIP

The International Alliance of Research Universities (IARU) is a partnership of ten of the world's leading universities. The membership will be limited to ten for the first three years after which additional members may be added to widen geographic representation. Professor Ian Chubb, Vice-Chancellor and President of the Australian National University, will be the Chair of the IARU until the end of 2007.

The IARU comprises a selected group of research-intensive universities that share similar values, a global vision and a commitment to educating future world leaders.

The partnership is deep: the level of trust, understanding and compatibility between the partners allows for substantial and meaningful engagement to occur.

At the same time, the partnership is broad: a wide range of teaching and research possibilities are now open to us that will be better than any single one of us could provide on our own.

The partnership is influential: the quality of the universities involved is beyond dispute, as is their commitment to benefit humankind through the education of leaders with the global vision, tolerance and empathy with different cultures so necessary in the world today.

The IARU will combine its educational objectives with top quality and shared research that addresses many of the major issues that confront us wherever we live on this planet. It will bring new opportunities for research, teaching and learning that is truly global in scope.



AUSTRALIAN NATIONAL UNIVERSITY

Established sixty years ago to be a national hub of cutting-edge research, the Australian National University is now one of the foremost research universities in the world. Among its world-class facilities are the most powerful computer in Australia, modern laboratories and lecture theatres, two million volumes lining the shelves of several libraries, and access to a comprehensive range of digital information.

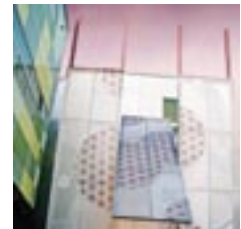
The University is only a short walk from the centre of the national capital, Canberra, which combines the friendly atmosphere of rural Australia with the sophistication of an international city.

Beyond its central city campus, the University has observatories at Mount Stromlo near Canberra and at Siding Spring in western New South Wales, as well as the North Australia Research Unit in Darwin and a research centre at Kioloa on the New South Wales south coast.

Since its foundation, when it comprised four research schools with no students, the Australian National University has attracted leading academics from Australia and around the world. The University now employs some 1,400 academic staff, more than half of whom are full-time researchers.

The University's student body is not large by international standards – it has approximately 13,400 students. Of these, 8,700 are enrolled in undergraduate or non-award courses and more than 4,700 are doing postgraduate study – including around 1,800 students enrolled in PhDs. 15 per cent of students are undertaking research degrees and 35 per cent postgraduate programs – easily the highest proportions of any Australian university. International students account for over 20 per cent of the student population, there being more than 2,800 students from 90 countries.

www.anu.edu.au



Eidgenössische Technische Hochschule Zürich
Swiss Federal Institute of Technology Zurich

SWISS FEDERAL INSTITUTE OF TECHNOLOGY ZURICH

The Swiss Federal Institute of Technology Zurich (ETH Zurich) was inaugurated in 1855 and was from the start one of the most renowned universities of technical and natural sciences in Europe. ETH Zurich embraces advancing and supporting high-quality education and research at the highest international level.

Thanks to the scientific knowledge generated through its research activities, ETH Zurich can continuously offer the latest level of knowledge and scientific qualifications and adapt to the needs of society and the environment. The Bachelor's and Master's programmes and the offer in continuing education are inextricably linked to the research conducted at ETH Zurich, providing students with excellent specialist education combined with outstanding all-round skills.

Three hundred and sixty professors in fifteen departments are the backbone of research and education at ETH Zurich. Over 8,000 persons, 30 per cent of whom are women, work in research, education and the administration. ETH Zurich has 12,500 students, including 3,000 postgraduate (doctoral and continuing education) students. ETH Zurich's international outlook is also reflected in the international composition of its faculty and student body. Close to 60 per cent of the professors are non-Swiss, while the share of international graduate students is 52 per cent.

ETH Zurich consistently holds a top place in international rankings. In the Times Higher Education Supplement's Ranking (November 2005), ETH Zurich was placed 12th among the world's best engineering and science universities. Twenty-one Nobel Prize laureates are associated with ETH Zurich, having either studied, taught or conducted research here. The roster ranges from Wilhelm Konrad Roentgen (Physics 1901) and Albert Einstein (Physics 1920) to Kurt Wuethrich (Chemistry 2002).

www.ethz.ch



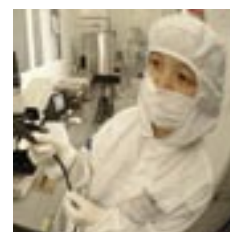
From a modest medical school founded in 1905, the National University of Singapore (NUS) has evolved into a leading global university with distinctive strengths in education and research. As the country's foremost and most prestigious institution of higher learning, NUS contributes to Singapore's development and modernisation by producing well-educated graduates to meet its manpower needs. An alumni community of more than 150,000 graduates contributes to shaping all spheres of Singapore society.

The University's 150-hectare Kent Ridge campus is a hub of activity and buzz with 31,000 students from more than 70 countries. Students are enrolled in 13 faculties offering courses ranging from architecture to medicine to music. A special feature of NUS education is the global dimension of its courses – both graduate and undergraduate – in partnership with some of the world's best institutions. Special initiatives include the University Scholars Programme and the Overseas Colleges.

A research-intensive university, NUS has a close teaching-research association with 13 national-level, 12 university-level and more than 60 faculty-based research institutes and centres. A 'no walls' collaborative culture forms the bedrock of NUS's research-intensive vibrancy. Its research in areas such as bioengineering, quantum cryptography, stem cells and Asian Studies are at the leading edge.

NUS plays an active role in international academic networks. Together with its valued partners, and within the context of Singapore's development as a dynamic city-state, NUS strives to be a university of choice for students, and an innovative hub where new knowledge is created.

www.nus.edu.sg



PEKING UNIVERSITY

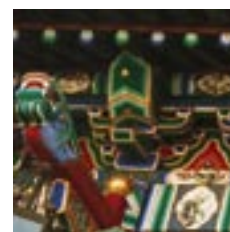
Founded in 1898, Peking University was originally named the Imperial University of Peking. It was the first comprehensive national university, as well as the supreme administrative organ in China at that time. In May of 1912, the University adopted its present name.

In 1952, to meet the reform demands of the country, Peking University became a more comprehensive university focusing on both the humanities and the sciences, with an added emphasis on research. With the incorporation of the former Beijing Medical University, a completely new Peking University was formed in April 2000. Today, Peking University's academics include natural sciences, applied sciences, engineering sciences, medical sciences, as well as the humanities, social sciences, management sciences, linguistic sciences, education studies, and a variety of other fields to become the newest standard for comprehensive higher education institutions.

Peking University is an international, progressive university with 2,530 international students from over 100 countries registered in 2005. Every year, many heads of state and foreign dignitaries visit Peking University. Since 2000, over 40 Nobel laureates have given lectures at the University. Additionally, Peking University has established exchange programs with 227 renowned universities from 49 countries and regions. The University also has 52 academicians of the Chinese Academy of Sciences and eight academicians of the Chinese Academy of Engineering.

The students of Peking University enjoy a rich and vibrant campus life. There are nearly one hundred student societies that provide a rich variety of culture, sports and other social activities for students. Each year, hundreds of academic seminars and lectures are offered to students, which highlight the cultural life on campus. Peking University is a vibrant institution embarking on an exciting journey to further develop itself in the 21st century.

www.pku.edu.cn





UNIVERSITY OF CALIFORNIA, BERKELEY

On March 23, 1868, the state of California enacted the Organic Act, chartering the University of California as a public trust and setting the stage for excellence in higher education in the West. In September 1873, after the completion of South Hall and North Hall, the College of California moved from its buildings in Oakland to the new site in Berkeley, becoming the first campus of today's 10-campus University of California system.

With nearly 33,000 students, a distinguished faculty, 351 degree programs, and alumni in positions of national and international leadership, Berkeley is internationally noted for its academic excellence. Its faculty includes seven Nobel laureates, 128 members of the National Academy of Sciences, 75 members of the National Academy of Engineering, and more NSF Young Investigators than there are at any other university in the country. In national surveys, Berkeley's academic departments consistently rank among the top five in the country.

By any standard, Berkeley ranks as one of the world's leading intellectual centers, renowned for the size and quality of its libraries and laboratories, the scope of its research and publications, and the distinction of its faculty and students. More students who earn bachelor's degrees at Berkeley complete Ph.D.'s than graduates of any other university in the country.

The state of California currently provides for about a third of the University's operating budget. The balance is made up, in part by gifts from alumni and parents who support Berkeley's mission of teaching, research and public service.

www.berkeley.edu



UNIVERSITY OF CAMBRIDGE

The University of Cambridge was founded in 1209, when a group of scholars left Oxford to set up a new institution in Cambridge. Since its establishment, it has attracted many of the very best scholars, and is known worldwide for the excellence of its teaching and research, and the quality of its graduates. Its reputation is endorsed by the Quality Assurance Agency and by other external reviewers of learning and teaching, and it is consistently and independently rated as being among the best institutions in the world. Cambridge academics have amassed 80 Nobel Prizes – more than any other UK university.

These high standards are the result of both the learning opportunities offered at Cambridge and by its extensive resources, including libraries, museums and other collections. Teaching consists not only of lectures, seminars and practical classes led by people who are world experts in their field, but also more personalised teaching arranged through individual Colleges.

The current student population stands at just over 18,000, of which approximately 4,000 are from overseas. Of the 8,000 staff employed by the University, approximately half are actively engaged in teaching and research.

With a foundation of eight centuries' experience to draw upon, the University of Cambridge continues to innovate in every area of academic endeavour. Strength and depth across the disciplines, combined with people, facilities and resources of the highest calibre, ensure that the University remains a world-class centre of research and teaching.

www.cam.ac.uk





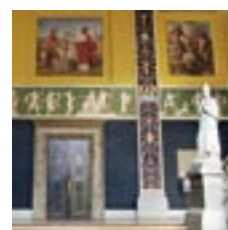
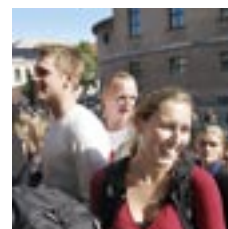
UNIVERSITY OF COPENHAGEN

The University of Copenhagen was founded in 1479, and is the oldest university in Denmark. The mission of the University is to conduct research of the highest calibre, to offer research-based teaching at the highest academic level, and to communicate research and learning to scientific and scholarly environments as well as to the public in general. The University safeguards independent basic research, free of economic and political interests. A distinctive feature of the University is its multiplicity of academic fields, creating a firm foundation for interdisciplinary activities.

Located across the capital, the University has a student body of over 32,000 and strives to challenge its students both intellectually and personally. Students are encouraged to adopt a critical approach in their academic work and to partake in the conduction of research. Instruction takes the form of lectures, seminars and laboratory courses. The primary language of instruction is Danish, but the University of Copenhagen offers more than 350 courses in English each semester in almost every subject field plus a number of study programmes conducted entirely in English. This allows exchange students to put together a comprehensive workload to meet the demands of their home universities.

The University maintains teaching and research in a range of departments/ institutes in its six faculties of Health Science, Humanities, Law, Science, Social Science and Theology. In addition, the University also participates in, and is home to, a number of basic research centres financed by external funds, eg the Danish National Research Foundation, as well as number of interdisciplinary research centres. These offer students and researchers unique opportunities for interaction in a rewarding environment in an international setting.

www.ku.dk



UNIVERSITY OF OXFORD

Although there is no clear date of foundation, teaching in some form has existed in Oxford since 1096. Today, the University is a leading teaching and research institution, regularly ranked near the top of international league tables. It is made up of five academic divisions and thirty nine independent colleges, which relate to the university in a federal structure. The colleges provide tutorial teaching, a system for which Oxford is known worldwide, and enable undergraduates and graduates to be members of small, supportive, interdisciplinary communities whilst also being part of a large complex university.

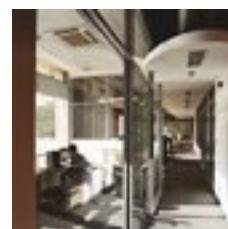
The University has 11,225 undergraduate and 6,490 graduate students; over 25 per cent come from outside the UK, drawn from 120 countries.

University departments and colleges are located throughout the city centre, and beyond, and include major research developments at Headington for medical sciences and at the Begbroke Science Park, which provides an interdisciplinary environment for collaboration with industry. Commercialisation of intellectual property is undertaken through ISIS Innovation, which has established 50 spin-out companies over the last five years. Current research developments include the James Martin 21st Century School, which aims to stimulate research on contemporary global issues, and a new Humanities Research Centre.

Oxford has extensive library provision, including the Bodleian, which is a copyright deposit library; there are also University museums, Botanic Gardens and other collections which are a resource for scholars and for the public.

The University's international activity includes institutional and research collaborations; teaching partnerships; and, through Oxford University Press, a presence in more than fifty countries.

www.ox.ac.uk





THE UNIVERSITY OF TOKYO

The University of Tokyo was established in 1877, as the first national university in Japan. With about 4,200 faculty members, it offers courses in essentially all academic disciplines at both undergraduate and graduate levels and provides research facilities for these disciplines. The University aims to provide its approximately 15,000 undergraduates and 14,000 graduate students with opportunities for intellectual development and to acquire professional knowledge and skills. As Japan's leading university, it is known for the excellence of its faculty and students. Many of its graduates have gone on to become leaders in various spheres.

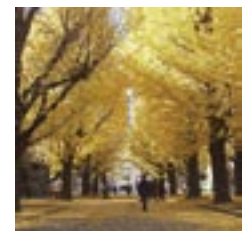
The University organization consists of the College of Arts and Sciences, nine faculties, and 15 graduate schools. It also operates 11 institutes in fields such as medical science, earthquake research, and Oriental Culture, and has two kinds of shared facilities.

The University library system, centered on the General Library, is like a network linking the 55 libraries affiliated with the various faculties, institutes, and graduate schools. It holds about 8.1 million books and periodicals and has been actively digitizing scholarly information recently. The University Museum is a unique system of specialized museums, covering a wide range of fields.

The University has a tradition of giving considerable autonomy to its student body. Students carry out two annual festivals, which are open to the public and attract many visitors.

The University of Tokyo places high priority on nurturing links with other institutions both within Japan and abroad, and hosts students and academics from around the world. The University of Tokyo will continue to face up to the research and educational demands of international society while pushing towards its goal of creating a global research and educational network.

www.u-tokyo.ac.jp



YALE UNIVERSITY

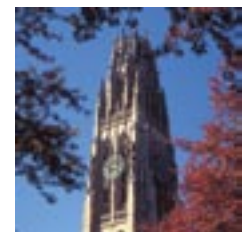
Founded in 1701, Yale University is located in New Haven, Connecticut (USA), and consists of twelve schools: Yale College, the four-year undergraduate school; the Graduate School of Arts and Sciences; and ten professional schools (Architecture, Art, Divinity, Drama, Forestry and Environmental Studies, Law, Management, Medicine, Music, and Nursing).

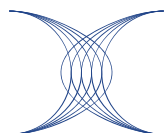
Among Yale's 11,500 students, there are more than 1,800 international students (16 per cent of all students and 9 per cent of undergraduates) from 110 different countries. International students admitted to any of the 59 Ph.D. programs in the Arts and Sciences pay no tuition and are given a generous annual stipend. In addition, there are 1,900 international visiting scholars and researchers at Yale each year.

The 5,200 students enrolled in Yale College are divided among twelve residential colleges, each with its own master, dean, dining hall, residences, and other facilities that contribute to a special sense of community. Admission to Yale College is need-blind (a family's finances are not considered in the admission decision) and financial aid is provided to all students based on need, irregardless of a student's citizenship. During their four years at Yale, all undergraduates have at least one opportunity to study, work, or conduct research abroad.

Yale's 3,200 faculty are conducting over 800 international research projects, teach 50 languages, and offer more than 600 courses with international content. The University is engaged in a US\$1 billion program of investment in science, engineering, and medicine to augment Yale's historical strengths in basic science research. Scholarship and teaching are supported by the Yale Libraries with 11.5 million volumes and the extensive collections of the Yale University Art Gallery, the Yale Center for British Art, and the Peabody Museum of Natural History.

www.yale.edu





INTERNATIONAL ALLIANCE OF
RESEARCH UNIVERSITIES